



# Aplani Laser Solutions

INDUSTRIAL MARKING SOLUTION

APLANI FIBER LASER ENGRAVING , CUTTING MACHINES ,  
DOT PIN MARKING MACHINES

RANGE AVAILABLE - 20w / 30w / 50w / 80w

Available in - Raycus / Max Source.

## Gold And Silver Laser Cutting Machine ALS - 60w

### Machine advantage:

- Long Working Life (1,00,000 Hours)
- Maintenance Free
- Low Energy Consumption (0.35 Kw/hour)
- Engraving Precision of Character 0.2 mm
- High Speed
- Convenient, Flexible, Pro-environment
- Software Format Support: Ai, Dxf, Dst, Bmp, Plt, Jpg etc.  
Compatible With Coral Draw Cad Photo Shop and other Software.



### Applicable Materials:

Mobile Key, Back-light Button, Microelectron (IC) Metal Products etc.

### Applicable Industries:

Gold and Silver Cutting and Jewellery Engraving, precision hardware, decorations, electrical appliance, auto parts, instruments both products glasses and watches and so on.

**Laser  
Sources  
20w, 30w,  
50w, 60w**



#2694, Timber Market, Ambala Cantt. Haryana (India)

(M) +91- 7056773357 , 9053519567

Email: [aplanilaser@gmail.com](mailto:aplanilaser@gmail.com)

## Portable Laser Marking Machine ALS - 30w

Model Type	Port able Laser Marking Machine
Suitable for	Metal and Plastic
Laser Type	Fiber Laser
Marking Depth	Upto 0.5 mm
Power Source(W)	20,30,50 ,60 optional
Marking Range	100*100, 200*200, 300*300 mm
Cooling Mode	Air Cooling
Model No.	ALSF - 30
Size	Depends on Model
Frequency	20 -200
Marking Speed Capacity	7000 mm/s
Maximum Speed	8000 mm/s
Place of Origin	India
Control Software	EZCAD



## Fiber Laser Metal Marking Machine ALS - 50w



Model Type	Fibre Laser Metal Marking Machine
Suitable for	Gold And Silver
Laser Type	Fiber Laser
Marking Depth	Upto 1.2 mm
Power Source(W)	50 ,60,80 optional
Marking Range	100*100, 200*200, 300*300 mm
Cooling Mode	Air Cooling
Model No.	ALSF - 50
Control Software	EZCAD
Frequency	20 -200
Maximum Speed	8000 mm/s
Place of Origin	India
Long Working Life	(100000 Hours)

**Marked Sample**



# UV Laser Marking Machine ALS - 5w



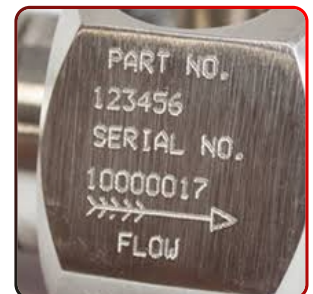
Model Type	Aplani UV Laser Marking Machine
Suitable for	Plastic
Type	Cabinet Type
Laser Type	UV Laser
Marking Depth	0.1 mm
Power	3,5,10 W
Marking Area	100,150 mm
Model Name/Number	ALS - UV
Laser Wavelength	355 nm
Cooling Mode	Water Cooled
Marking Speed Capacity	6000 mm/s
Brand	Aplani Laser Solutions

# Dot Pin Marking Machine ALS - 2D

Model Type	Aplani Dot Pin Marking Machine 2D
Marking Speed	5000 mm/s
Usage/Application	Marking Logo, Words, Brand, Date, Series Number, Batch Number, Sign, Drawing, Photo, QR Code, e tc.
Material	Mild Steel
Automation Grade	Automatic
Voltage	240 V
Colour	Black
Frequency	50-60 Hz
Pressure	0.3 - 0.8 Mpa
Area	80 x 130 mm
Net Weight	30 Kg
Dimensions	250 x 150 x 530 mm
Power	100W



**Marked Sample**





# Aplani Laser Solutions

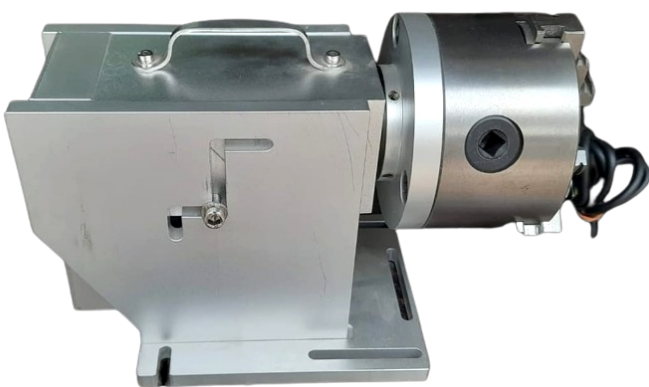
INDUSTRIAL MARKING SOLUTION



ALS - Portable Dot  
Pin Marking Machine



ALS - 2D Dot Pin  
Marking Machine



ALS - Rotary



ALS - 3D Dot Pin  
Marking Machine

#2694, Timber Market, Ambala Cantt.  
Haryana (India)

(M) +91- 7056773357 , 9053519567

Email: [aplanilaser@gmail.com](mailto:aplanilaser@gmail.com)